

LACTOSCAN
ULTRASONIC MILK ANALYZER

MILKOTRONIC LTD

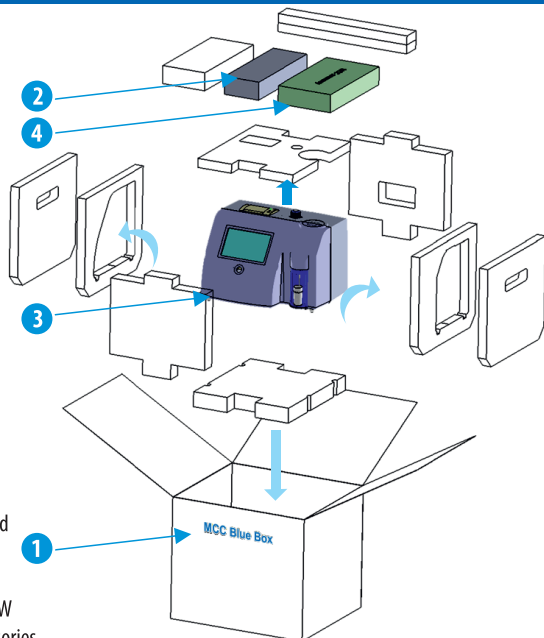
www.lactoscan.com
www.milkotronic.com

LACTOSCAN MCCW

MILK ANALYZER Directly controlled by MS Windows

Quick Start Guide

1 UNPACKING INSTRUCTIONS



Contents:

1. Cardboard box
2. Box with keypad and mouse
3. Milk analyser Lactoscan MCCW
4. Box with accessories

2 SAFETY INSTRUCTIONS

1. Read this manual carefully and make sure that you understand all the instructions.
2. For safety purposes the device is equipped with grounded power cable. If there is no grounded electrical outlet where the device will be used, please, install such before using the device.
3. Place the device on leveled and stable plate. In case it falls or is severely shocked it may be damaged.
4. Connect to the electrical network in such a way that the power cable to stay away from the side for accessing the device and not to be stepped on.
5. Do not disassemble the unit in order to avoid possible electrical shock. In case of malfunction contact your local dealer.
6. Handle the liquids the device works with carefully, following all the instructions for their preparation.
7. Place the switching adaptor in such a way as to be protected from overflow and spillage of liquids.

3 ASSEMBLING THE DEVICE

Open the box. Carefully take out the contents of the box.
Place the machine on flat level surface

4 SWITCHING ON THE SYSTEM

1. Plug in the analyser power supply in one of the back panel inlets



LACTOSCAN MCCW

Quick Start Guide

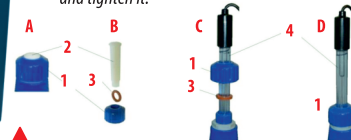
2. Plug in any USB device which will be needed (keyboard, mouse, etc.) in the USB connector



3. Switch on the Lactoscan from the back panel switch
If you need to measure pH, follow the procedure below:



1. Loosen the nut anti-clockwise (1).
2. Pull up the stopper (2)
3. Carefully place the pH probe paying attention not to remove the sealing O-ring (3)
4. Place the probe with the nut in the hole (C & D) and tighten it.

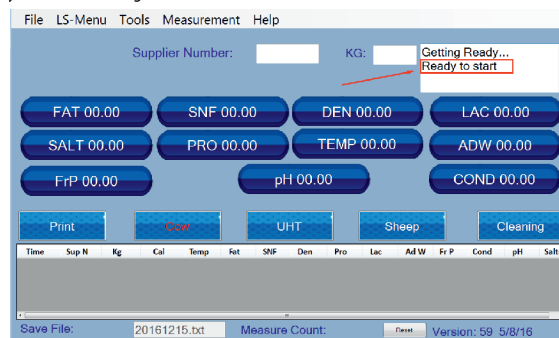


! If you 'll not use the analyser more than 2 days, you must take out the probe and to place the stopper back. The pH probe must be stored separately as per the instructions of point 2.3 Appendix 3.



4. Power On the Tablet

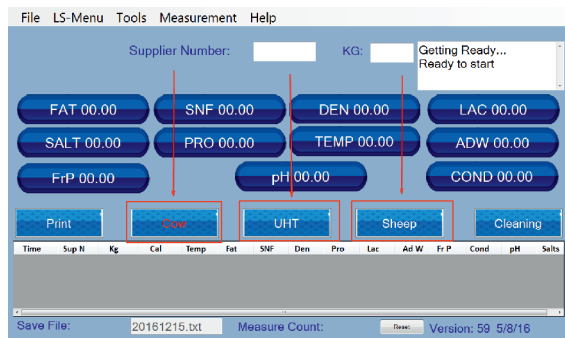
5. Wait until the software opens
6. If everything is connected properly you should receive a "Ready to Start" message on the screen



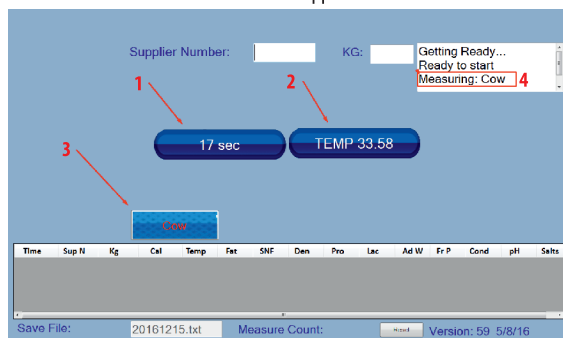
7. Fill the glass with a milk sample and place it in the analyser, when the long hose is in the milk, the short hose is not covered in milk



8. Start a measurement by pressing the calibration name on the screen for the type of milk you are going to measure (if you are measuring cow milk, press the Cow Button)

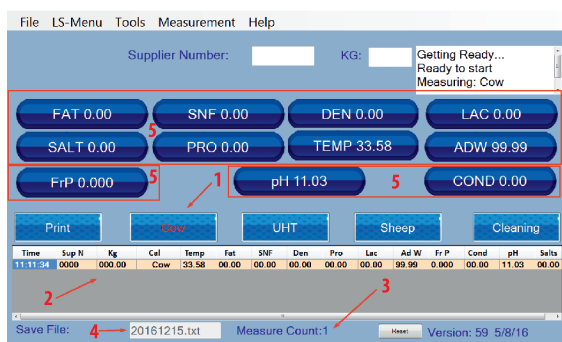


9. When the measurement is started on the screen appears



- Where: Position 1: The seconds left until the measurement is finished
Position 2: Temperature of the sample
Position 3: The calibration channel that is being used
Position 4: Message about what calibration you are using for measurement

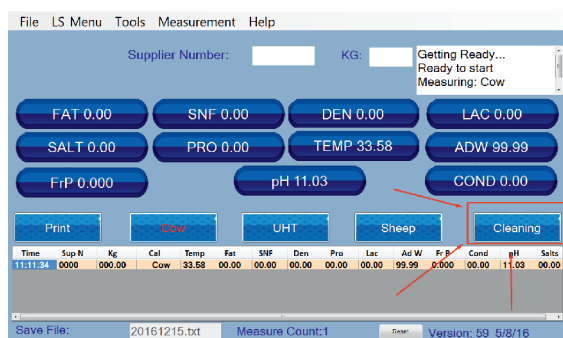
10. When the measurement is finished



- Where: Position 1: Highlighted the last used calibration
Position 2: Result collector for all the measurements done since the start of the program
Position 3: Measure count since the start of the program
Position 4: Archive file for the results
Position 5: Fields for the parameter results of the last measurement

11. Continue work by placing a new sample in the glass and press the calibration buttons

12. When finished work put clean water in the glass and start cleaning by pressing the cleaning button



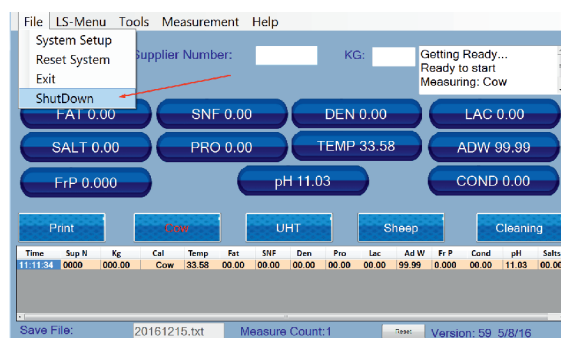
13. Please refer to the user manual about the proper way of cleaning the machine

IMPORTANT

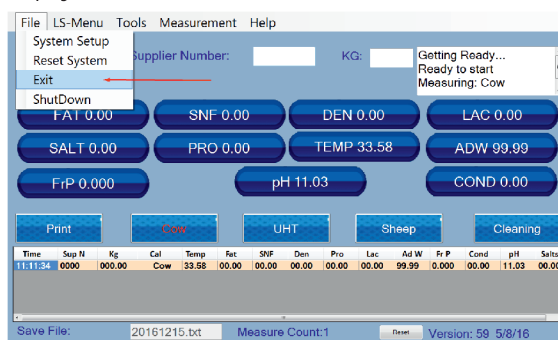
THE MAIN REASON FOR MALFUNCTIONING OF THE DEVICE IS THE BAD CLEANING OF THE SYSTEM AFTER MAKING ANALYSIS. In case of malfunction due to the bad cleaning of the analyser your guarantee is not valid anymore and any repair has to be paid.

5 TURNING OFF THE SYSTEM

1. To turn off the tablet select **File -> Shutdown**



2. To exit the program select **File->Exit** to close the software to use the tablet



3. Turn off the analyser from the back panel switch

*NOTE: If you have any questions about any of the procedures, please contact Milkotronic LTD

6 OPTIONS AND ACCESSORIES

Bar-code reader (USB)



External Standard Printer



HDMI Display 21"

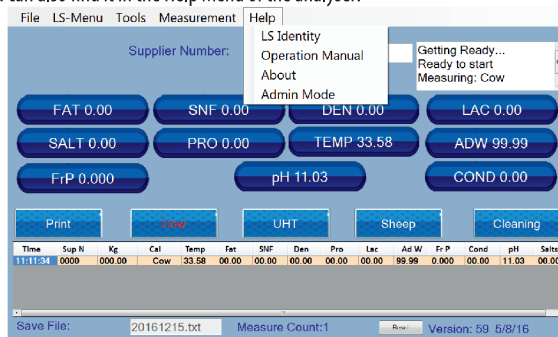
Wireless keyboard and mouse (USB)

Platform scales (serial interface)



7 MORE INFORMATION

You can download the Instruction Manual of the device from our website http://lactoscan.com/editor/ufu/manuals/MCCW/Lactoscan_MCCW_Eng.pdf
You can also find it in the Help Menu of the analyser:



The Instruction Manual of the Data Base Application can be downloaded from the Help Menu of the analyser.

8 SUPPORT

For any additional information and further question regarding the servicing of the device, contact us at: mainservice@lactoscan.com

HEAD OFFICE:
4, Narodni Buditeli Str.
8900 Nova Zagora
BULGARIA
Phone/Fax: + 359 457 67082

MILKOTRONIC LTD
office@lactoscan.com
www.lactoscan.com
www.milkotronic.com