

Lactoscan Calibration

The program LSCal.exe is used to calibrate Lactoscan Milk Analyzers. Two samples are used – with high and low fat, the third measurement group is measurement with water. Measurements are taken in the following order: high fat sample, low fat sample, water.

The connection between the device and the computer is via RS cable (The cables diagram is given in the Operation Manual). The program runs under Windows 95 or newer version.

Program installation:

For its normal work, program needs MS Microsoft ActivX Control MSflxgrd.ocx, described in the following files: Msflxgrd.ocx and Msflxgrd.dep. This control can be installed using the procedures described by Microsoft or using the following procedure:

Copy above pointed files in the needed directory

Copy the file instalFIG.bat in the same directory

After starting instalFIG.bat (double click), the ActivX Control will be installed and the system is ready for starting LSCal.exe.

After that, the program LSCal.exe simply has to be copied in the folder, chosen by the customer. In order to be removed – just delete it.

Note:

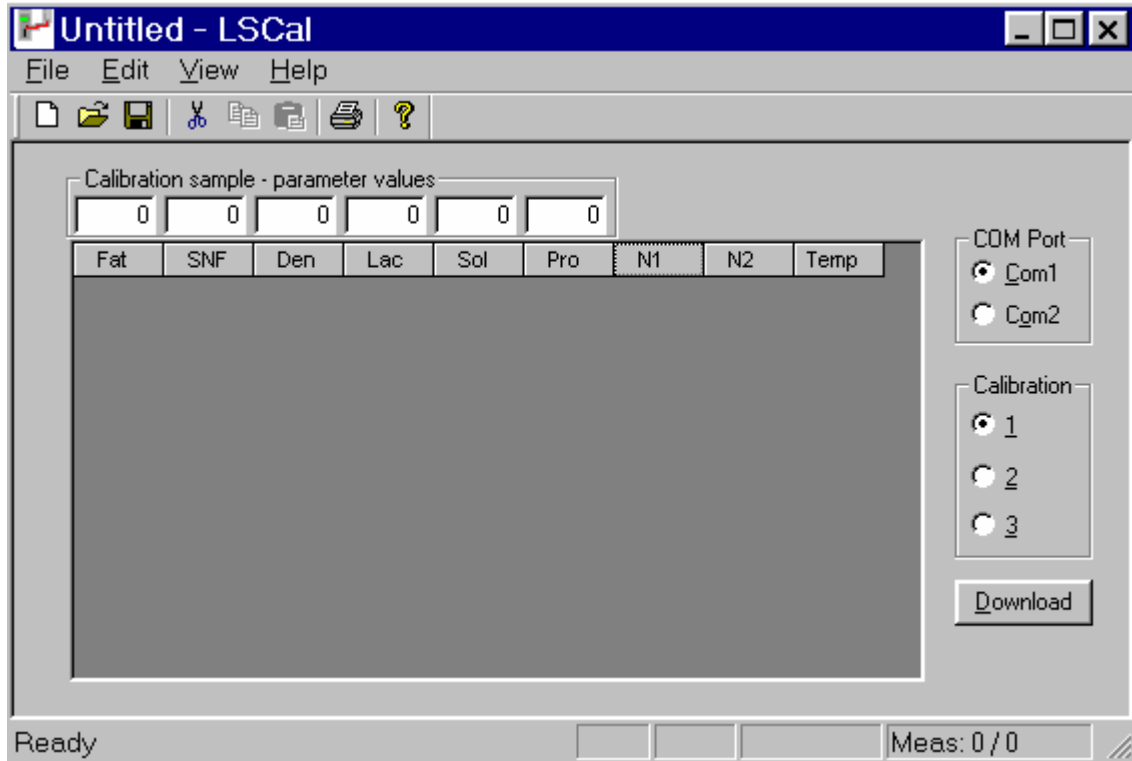
The analyzer has to be with Net Number 0 (default Net Number).

Note:

Before starting the calibration procedure, the operator has to be acquainted with the analyzer's manual, mainly in its part preparation of samples for calibration and programs' descriptions under DOS as well as calibration methods.

Program control:

After the program is started the display shows the following:



Radio button:

COM Port

- 1 – COM 1 connection
- 2 – COM 2 connection

Calibration

- 1 – Calibration cal 1
- 2 – Calibration cal 2
- 3 – Calibration cal 3

Control buttons:

- Download** – saving the new calibration in the device

Edit boxes:

- Group Calibration sample – parameter values** – set the sample parameters values